

DÜYEK

NİHÂVEND SARKI

MÜZİK: AYDIN TEKİNDÖR

SÖZ: NAİME ÖZYURT

♩ = 192

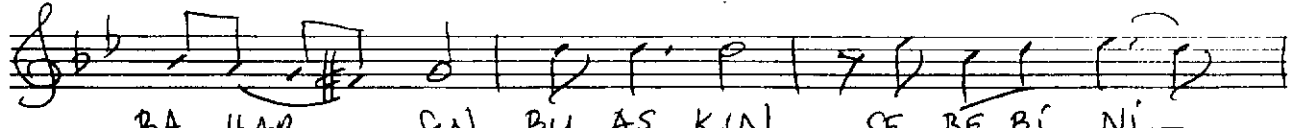
MEVSİMLER DEĞİŞSE DE BİTMEMEYECİK BAHAR SIN



Aranagmesi



MEV SİM LER DE ĞİŞ SE DE BİT ME YE CEK



BA HAR - SIN BU AŞ KIN SE BE Bİ Nİ -



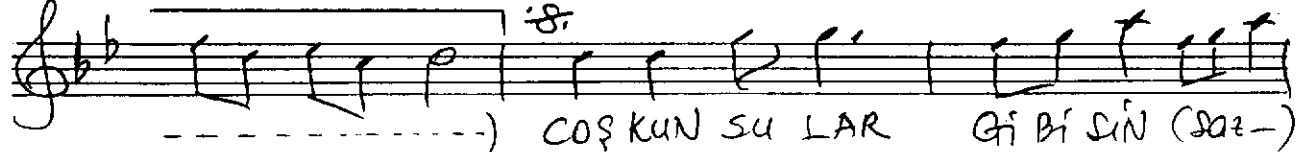
BA NA SOR MA YA CAK - SIN BA NA SOR MA



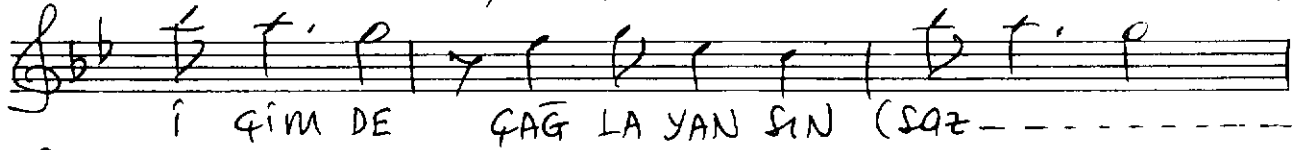
YA CAK - SIN (Saz - - - - -)



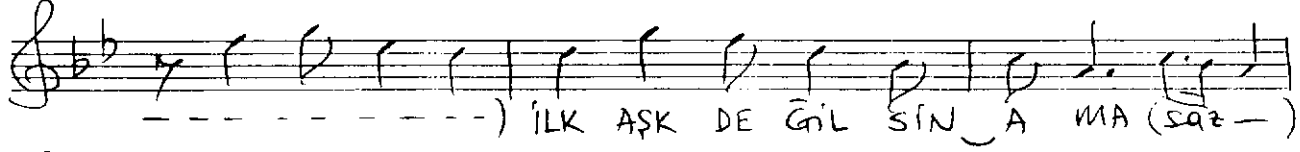
BA NA SOR MA YA CAK - SIN (Saz - - - - -)



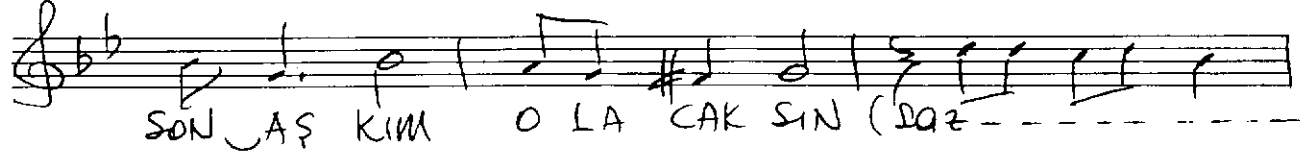
- - - - -) COŞ KUN SU LAR Ğİ Bİ SİN (Saz - - - - -)



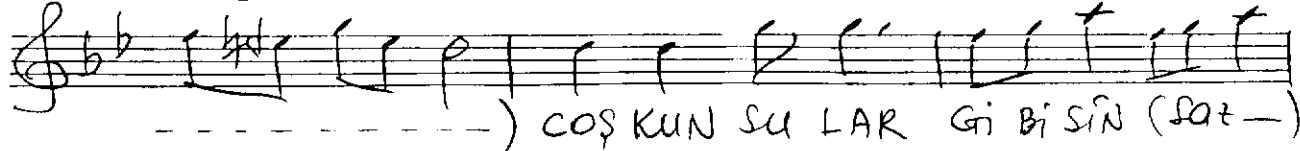
İ ĞİM DE ÇAĞ LA YAN SİN (Saz - - - - -)



- - - - -) İLK AŞ K DE ĞİL SİN A MA (Saz - - - - -)



SON AŞ KIM O LA CAK SİN (Saz - - - - -)



- - - - -) COŞ KUN SU LAR Ğİ Bİ SİN (Saz - - - - -)

(SAYFA-2)

AYDIN TEKİNDÖR

(MEVSİMLER DEĞİŞSE DE)

